



Centers for Medicare & Medicaid Services
**Serving American Indians
and Alaska Natives in**
Louisiana, New Mexico, Oklahoma, and Texas





Centers for Medicare & Medicaid Services (CMS) staff work with beneficiaries, health care providers, state governments, community groups, and others to provide education and outreach on CMS programs.




American Indians and Alaska Natives

If you have questions about CMS programs in relation to American Indians or Alaska Natives:

- email the CMS Division of Tribal Affairs at tribalaffairs@cms.hhs.gov, or
- contact a CMS Native American Contact (NAC). For a list of NACs and their information, visit <https://go.cms.gov/NACTAGlist>

To contact **Indian Health Service** in these states:

- call the Albuquerque Area Office at 1 (505) 256-6800 or visit <https://www.ihs.gov/albuquerque/contactus/>
 - call the Oklahoma City Area Office at 1 (405) 951-3820 or visit <https://www.ihs.gov/oklahomacity/contactus/>
 - call the Nashville Area Office at 1 (615) 467-1500 or visit <https://www.ihs.gov/nashville/contactus/>
- 



Why Enroll in CMS Programs?

Patients who enroll in CMS programs help support their Indian health care hospital and clinics, their own health, and the health of others.

Patients enrolled in Medicaid, the Children's Health Insurance Program, or Medicare enable Indian health hospitals and clinics to bill these programs for services provided. These programs bring money into the health care facility, which the facility can then use to hire more staff and pay for new equipment and building renovations. It can also save Purchased and Referred Care dollars for other patients.



State-by-State Assistance

Find information about coverage and Indian health facilities in your state. The map included in this booklet shows the location of these facilities.

Louisiana

Medicare

LA Medicare

<https://www.ldi.la.gov/consumers/senior-health-shiip>

1 (225) 342-5301

Children's Health

Louisiana Children's Health Insurance Program (LaCHIP)

<http://ldh.la.gov/index.cfm/page/222>

1 (877) 252-2447

Medicaid

Louisiana Senior Health insurance Information Programs (SHIP)

<http://ldh.la.gov/index.cfm/subhome/1>

1 (888) 342-6207

Marketplace Coverage

healthcare.gov

healthcare.gov

1 (800) 318-2596

Indian Health Service, Tribal, or Urban Facilities

Chitimacha Health Clinic

3231 Chitimacha Trail
Charenton, LA 70523

<http://www.chitimacha.gov/departments-services/health-clinic>

1 (337) 923-9955

Coushatta Health Department

2003 C. C. Bel Road
Elton, LA 70532

<https://www.ihs.gov/nashville/healthcarefacilities/>

1 (337) 584-1439

Jena Band of Choctaw Indians Health Clinic

1018 Chata Yakni

Jena, LA 71371

<http://jenachoctaw.org/content/health>

1 (318) 992-2727

New Mexico

Medicare

New Mexico Senior Health insurance Information Programs (SHIP)

<http://www.nmaging.state.nm.us/>

1 (800) 432-2080

Children's Health

Centennial Care for Children

<http://www.hsd.state.nm.us/LookingForInformation/keeping-kids-healthy.aspx>

[LookingForInformation/keeping-kids-healthy.aspx](http://www.hsd.state.nm.us/LookingForInformation/keeping-kids-healthy.aspx)

1 (505) 827-3122

Medicaid

Centennial Care

<http://www.hsd.state.nm.us/LookingForAssistance/centennial-care-overview.aspx>

[LookingForAssistance/centennial-care-overview.aspx](http://www.hsd.state.nm.us/LookingForAssistance/centennial-care-overview.aspx)

1 (505) 827-3122

Marketplace Coverage

bWell New Mexico Health Insurance Exchange

<https://www.bewellnm.com/>

1 (833) 862-3935

Indian Health Service, Tribal, or Urban Facilities

Acoma-Canoncito-Laguna Hospital

80 B Veterans Boulevard
Acoma, NM 87034
[https://www.ihs.gov/
albuquerque/healthcarefacilities/
acomacanoncitolaguna/](https://www.ihs.gov/albuquerque/healthcarefacilities/acomacanoncitolaguna/)
1 (505) 552-5300

Albuquerque Indian Health Center

801 Vassar Drive Northeast
Albuquerque, NM 87106
[https://www.ihs.gov/albuquerque/
healthcarefacilities/albuquerque/](https://www.ihs.gov/albuquerque/healthcarefacilities/albuquerque/)
1 (505) 248-4000

First Nations Community Health Source – Truman Clinic

625 Truman Street Northeast
Albuquerque, NM 87110
<https://www.fnch.org/>
1 (505) 248-2990

First Nations Community Health Source – Zuni Clinic

5608 Zuni Road Southeast
Albuquerque, NM 87108
<https://www.fnch.org/>
1 (505) 262-2481

Isleta Health Clinic

1 Sagebrush Street
Isleta, NM 87105
[https://www.isletapueblo.com/tribal-
programs/](https://www.isletapueblo.com/tribal-programs/)
1 (505) 869-3200

Jemez Health Center

110 Sheep Springs Way
Jemez Pueblo, NM 87024
<http://www.jemezpueblo.org/jhhs-clinic.aspx>
1 (575) 834-7413

Jicarilla Apache Health Care

500 Mundo Road
Dulce, NM 87528
[https://www.ihs.gov/Albuquerque/
healthcarefacilities/jicarilla/](https://www.ihs.gov/Albuquerque/healthcarefacilities/jicarilla/)
1 (575) 759-3291



Mescalero Indian Hospital

318 Abalone Loop
Mescalero, NM 88340
[https://www.ihs.gov/Albuquerque/
healthcarefacilities/mescalero/](https://www.ihs.gov/Albuquerque/healthcarefacilities/mescalero/)
1 (575) 464-4441

Sandia Pueblo Health Center

203 Sandia Day School Road
Bernalillo, NM 87004
[https://sandiapueblo.nsn.us/health-
center/](https://sandiapueblo.nsn.us/health-center/)
1 (505) 867-4696

Santa Ana Health Center

2 Dove Road
Pueblo of Santa Ana, NM 87004
<http://www.santaana-nsn.gov/clinic.htm>
1 (505) 867-2497

Santa Clara Health Center

30 Los Alamos Highway
Española, NM 87532
[http://www.ihs.gov/albuquerque/
healthcarefacilities/santafe](http://www.ihs.gov/albuquerque/healthcarefacilities/santafe)
1 (505) 753-8393

Santa Fe Indian Hospital

1700 Cerrillos Road
Santa Fe, NM 87501
<https://www.ihs.gov/Albuquerque/healthcarefacilities/santafe/>
1 (505) 946-9282

Santo Domingo Health Center

85 West Highway 22
Santo Domingo, NM 87052
<http://www.kp-hc.org/>
1 (505) 465-3060

Taos-Picuris Indian Health Center

1090 Goat Springs Road
Taos, NM 87571
<https://www.ihs.gov/Albuquerque/healthcarefacilities/taospicuris/>
1 (575) 758-6977

Zia Health Clinic

155 Capitol Square Drive
Zia Pueblo, NM 87053
<https://www.ihs.gov/albuquerque/healthcarefacilities/zia/>
1 (505) 867-5258

Zuni Comprehensive Health Center

Route 301 North 21 B Avenue
Zuni, NM 87327
<https://www.ihs.gov/albuquerque/healthcarefacilities/zuniramah/>
1 (505) 782-4431

Oklahoma

Medicare

Oklahoma Senior Health Insurance Counseling Program (SHIP)

https://www.ok.gov/oid/Consumers/Information_for_Seniors/SHIP.html
1 (800) 763-2828

Children's Health

Sooner Care

<https://www.apply.okhca.org/Site/HMHomePage.aspx>
1 (800) 987-7767

Medicaid

SoonerCare

<https://www.apply.okhca.org/Site/HMHomePage.aspx>
1 (800) 987-7767

Marketplace Coverage

healthcare.gov

healthcare.gov
1 (800) 318-2596

Indian Health Service, Tribal, or Urban Facilities

Absentee Shawnee PlusCare

15702 East State Highway 9 Norman, OK 73026
<https://www.asthealth.org/welcome>
1 (405) 447-0477

Anadarko Indian Health Center

201 Parker McKenzie Drive Anadarko, OK 73005
<https://www.ihs.gov/oklahomacity/healthcarefacilities/anadarko/>
1 (405) 247-7900

Ardmore Health Clinic

2510 Chickasaw Boulevard
Ardmore, OK 73401
<https://www.chickasaw.net/our-nation/locations/ardmore-health-clinic.aspx>
1 (580) 226-8181



Bearskin Health Center

1 Turtle Drive
Wyandotte, OK 74370
<https://bearskinwellnesscenter.com/>
1 (918) 678-2070

Black Hawk Health Center

356110 East 930 Road
Stroud, OK 74079
<http://sacandfoxnation-nsn.gov/departments/health-services/>
1 (918) 968-9531

Carnegie Indian Health Center

212 East 4th Street
Carnegie, OK 73015
<https://www.ihs.gov/oklahomacity/healthcarefacilities/carnegie/>
1 (580) 654-1100

Cherokee Nation A-Mo Health Center

900 North Owen Walters Boulevard
Salina, OK 74365
<https://health.cherokee.org/>
1 (918) 434-8500

Cherokee Nation W. W. Hastings Hospital

100 South Bliss Avenue
Tahlequah, OK 74464
<https://health.cherokee.org/>
1 (918) 458-3100

Chickasaw Nation Medical Center – Ada

1921 Stonecipher Boulevard
Ada, OK 74820
<https://www.chickasaw.net/Our-Nation/Locations/Chickasaw-Nation-Medical-Center/Ada-Family-Practice-Clinic.aspx>
1 (580) 436-3980

Choctaw Nation Atoka Health Clinic

1585 West Liberty Road
Atoka, OK 74525
<https://www.choctawnation.com/choctaw-nation-atoka-health-clinic-0>
1 (580) 889-1981

Choctaw Nation Broken Bow Health Clinic

1300 Martin Luther King Drive
Broken Bow, OK 74728
<https://www.choctawnation.com/choctaw-nation-broken-bow-health-clinic>
1 (580) 584-2740

Choctaw Nation Health Center

1 Choctaw Way
Talihina, OK 74571
<https://www.choctawnation.com/choctaw-nation-health-care-center-0>
1 (918) 567-7000

Choctaw Nation Hugo Health Clinic

410 North M Street
Hugo, OK 74743
<https://www.choctawnation.com/choctaw-nation-hugo-health-clinic>
1 (580) 326-7561

Choctaw Nation Idabel Health Clinic

902 East Lincoln Road
Idabel, OK 74745
<https://www.choctawnation.com/choctaw-nation-idabel-health-clinic>
1 (580) 286-2600

Choctaw Nation McAlester Health Clinic

1127 South George Nigh Expressway
McAlester, OK 74501
<https://www.choctawnation.com/choctaw-nation-mcalester-health-clinic>
1 (918) 423-8440

Choctaw Nation Poteau Health Clinic

109 Kerr Avenue
Poteau, OK 74953
<https://www.choctawnation.com/choctaw-nation-poteau-health-clinic>
1 (918) 649-1100

These external links are not the responsibility of, or under the control of, the Centers for Medicare & Medicaid Services (CMS). Some of these links may be to non-Federal government websites (.gov). CMS disclaims responsibility for the content and privacy policies of non-.gov websites.

Louisiana

Tribal Health Facilities

- 📍 (1) Chitimacha Health Clinic
- 📍 (2) Coushatta Health Station
- 📍 (3) Jena Band of Choctaw Indians Health Clinic

New Mexico

Indian Health Service

- 📍 (4) Acoma-Canoncito-Laguna Hospital
- 📍 (5) Albuquerque Indian Health Center
- 📍 (6) Jicarilla Apache Health Care
- 📍 (7) Mescalero Indian Hospital
- 📍 (8) Santa Ana Health Center
- 📍 (9) Santa Clara Health Center
- 📍 (10) Santa Fe Indian Hospital
- 📍 (11) Taos Picuris Indian Health Center
- 📍 (12) Zia Pueblo Health Clinic
- 📍 (13) Zuni Comprehensive Health Center

Tribal Health Facilities

- 📍 (14) Isleta Health Clinic
- 📍 (15) Jemez Health Center
- 📍 (16) Sandia Pueblo Health Center
- 📍 (17) Santo Domingo Health Center

Urban Indian Health Clinics

- 📍 (18) First Nations Community Health Source – Truman Clinic
- 📍 (19) First Nations Community Health Source – Zuni Clinic

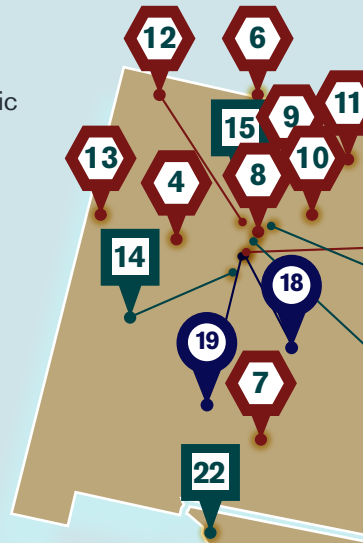
Texas

Tribal Health Facilities

- 📍 (20) Alabama-Coushatta Tribe Chief Kina Health Clinic
- 📍 (21) Kickapoo Community Health Center
- 📍 (22) Ysleta Del Sur Health Station

Urban Indian Health Clinic

- 📍 (23) Urban Inter-Tribal Center of Texas





- Tribal health facilities
- ◆ IHS Clinics
- Urban Indian health clinic

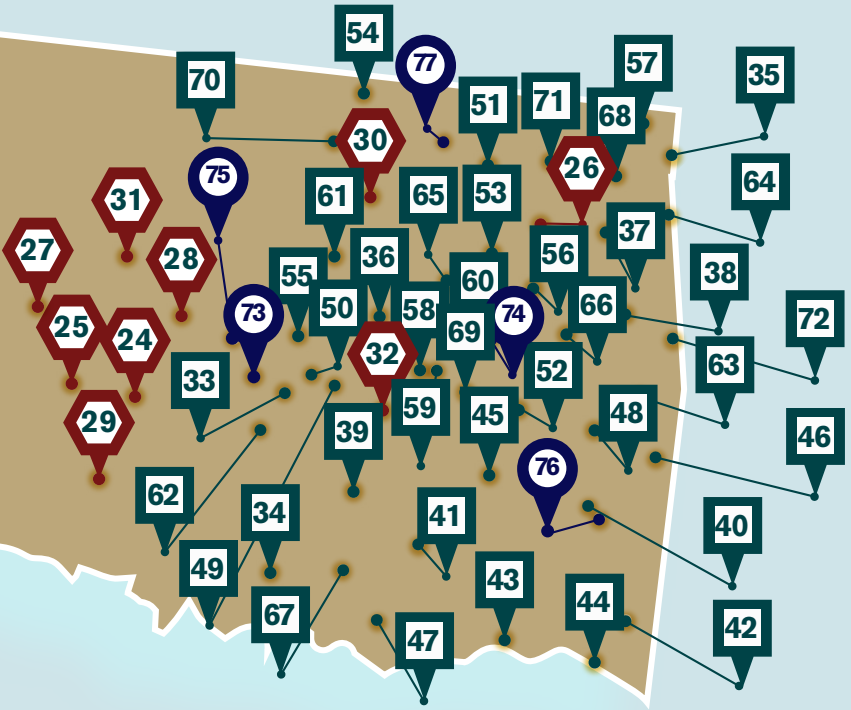
Oklahoma

Indian Health Service

- 📍 (24) Anadarko Indian Health Center
- 📍 (25) Carnegie Indian Health Center
- 📍 (26) Claremore Indian Hospital
- 📍 (27) Clinton Indian Health Center
- 📍 (28) El Reno Health Center
- 📍 (29) Lawton Indian Hospital
- 📍 (30) Pawnee Indian Health Center
- 📍 (31) Watonga Indian Health Center
- 📍 (32) Wewoka Indian Health Center

Tribal Health Facilities

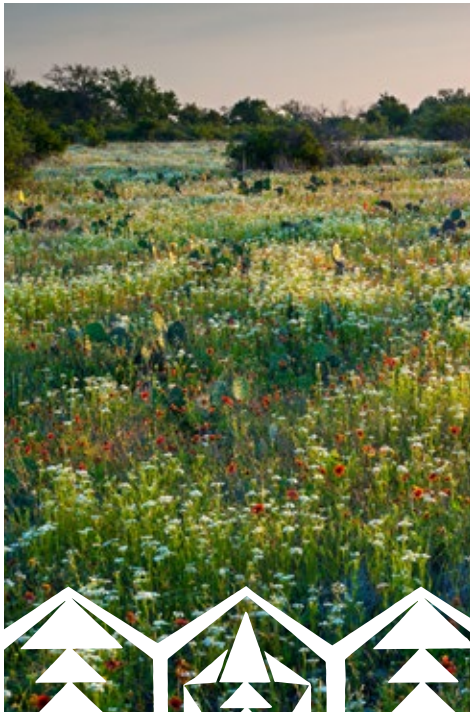
- 📍 (33) Absentee Shawnee PlusCare
- 📍 (34) Ardmore Health Clinic
- 📍 (35) Bearskin Health Center
- 📍 (36) Black Hawk Health Center
- 📍 (37) Cherokee Nation A-MO Health Center
- 📍 (38) Cherokee Nation W. W. Hastings Hospital
- 📍 (39) Chickasaw Nation Medical Center – Ada
- 📍 (40) Choctaw Nation Health Center
- 📍 (41) Choctaw Nation Atoka Health Clinic
- 📍 (42) Choctaw Nation Broken Bow Health Clinic
- 📍 (43) Choctaw Nation Hugo Health Clinic
- 📍 (44) Choctaw Nation Idabel Health Center
- 📍 (45) Choctaw Nation McAlester Health Clinic
- 📍 (46) Choctaw Nation Poteau Health Clinic
- 📍 (47) Choctaw Nation Regional Medical Clinic
- 📍 (48) Choctaw Nation Stigler Health Clinic
- 📍 (49) Citizen Potawatomi Health Center – East Clinic
- 📍 (50) Citizen Potawatomi Health Center – West Clinic
- 📍 (51) Cooweescoowee Health Center
- 📍 (52) Eufaula Indian Health Center
- 📍 (53) Indian Health Care Resource Health Center
- 📍 (54) Kanza Health Clinic
- 📍 (55) Kickapoo Health Center – McLoud
- 📍 (56) Koweta Indian Health Facility
- 📍 (57) Northeastern Tribal Health Clinic
- 📍 (58) Okemah Creek Nation Community Hospital
- 📍 (59) Okemah Indian Health Center
- 📍 (60) Okmulgee Indian Health Clinic



- 📍 (61) Perkins Family Clinic
- 📍 (62) Purcell Health Clinic
- 📍 (63) Redbird Smith Health Center
- 📍 (64) Sam Hider Health Clinic
- 📍 (65) Sapulpa Health Center
- 📍 (66) Three Rivers Health Center
- 📍 (67) Tishomingo Health Clinic
- 📍 (68) Vinita Health Center
- 📍 (69) Wetumka Indian Health Center
- 📍 (70) White Eagle Health Center
- 📍 (71) Will Rogers Health Center
- 📍 (72) Willma P. Mankiller Health Center

Urban Indian Health Clinics

- 📍 (73) Little Axe Health Center
- 📍 (74) Muscogee (Creek) Medical Center
- 📍 (75) Oklahoma City Indian Clinic
- 📍 (76) Talihina Community Clinic
- 📍 (77) Wah-Zha-Zhi Health Center



Choctaw Nation Regional Medical Clinic

1801 Chukka Hina Drive
Durant, OK 74701

<https://www.choctawnation.com/choctaw-nation-regional-medical-clinic>
1 (580) 920-2100

Choctaw Nation Stigler Health Clinic

2204 East Main Street
Stigler, OK 74462

<https://www.choctawnation.com/choctaw-nation-stigler-health-clinic>
1 (918) 967-9200

Citizen Potawatomi Health Center – East Clinic

2307 South Gordon Cooper Drive
Shawnee, OK 74801

<https://www.potawatomi.org/services/health/clinics>
1 (405) 273-5236

Citizen Potawatomi Health Center – West Clinic

781 Grand Casino Boulevard
Shawnee, OK 74804

<https://www.potawatomi.org/services/health/clinics>
1 (405) 964-5770

Claremore Indian Hospital

101 South Moore Avenue
Claremore, OK 74017

<https://www.ihs.gov/oklahomacity/healthcarefacilities/claremore/>
1 (918) 342-6658

Clinton Indian Health Center

10321 North 2274 Road
Clinton, OK 73601

<https://www.ihs.gov/oklahomacity/healthcarefacilities/clinton/>
1 (580) 331-3300

Cooweescoowee Health Center

395200 West 2900 Road
Ochelata, OK 74051

<https://www.cherokee.org/Services/Health/Health-Centers-Hospitals>
1 (918) 535-6000

El Reno Indian Health Clinic

1801 Parkview Drive
El Reno, OK 73036

<https://www.ihs.gov/oklahomacity/healthcarefacilities/el-reno-indian-health-center/>
1 (405) 234-8400

Eufaula Indian Health Center

500 Eunice Burns Road
Eufaula, OK 74432

<http://www.creekhealth.org/eufaula-indian-health-center/>
1 (918) 689-2540

Indian Health Care Resource Health Center

550 South Peoria Avenue
Tulsa, OK 74120

<https://www.ihcrc.org/medical>
1 (918) 588-1900

Kanza Health Clinic

3151 East River Road
Newkirk, OK 74647

http://kawnation.com/?page_id=3088

1 (580) 362-1039

Kickapoo Health Center – McCloud

105365 South Highway 102
McCloud, OK 74851

<http://www.okkthc.com/>

1 (405) 964-2081

Koweta Indian Health Center

31870 East Highway 51
Coweta, OK 74429

<http://www.creekhealth.org/koweta-indian-health-center/>

1 (918) 279-3200

Lawton Indian Hospital

1515 North Lawrie Tatum Road
Lawton, OK 73507

<https://www.ihs.gov/oklahomacity/healthcarefacilities/lawton/>

1 (580) 354-5000

Little Axe Health Center

15951 Little Axe Drive
Norman, OK 73026

<https://www.asthealth.org/welcome>

1 (405) 447-0300

Muscogee (Creek) Medical Center

1212 South Belmont Avenue
Okmulgee, OK 74447

<http://www.creekhealth.org/medical-center/>

1 (918) 756-4233

Northeastern Tribal Health Clinic

7600 South Highway 69-A
Miami, OK 74354

<https://www.nthscclinic.com/Home.aspx>

1 (918) 542-1655

Okemah Creek Nation Community Hospital

1800 East Coplin Road
Okemah, OK 74859

<http://www.creekhealth.org/cn-community-hospital/>

1 (918) 623-1424

Okemah Indian Health Center

309 North 14th Street
Okemah, OK 74859

<http://www.creekhealth.org/okemah-indian-health-center/>

1 (918) 623-1424

Oklahoma City Indian Clinic

4913 West Reno Avenue
Oklahoma City, OK 73127

<http://okcic.com/services-specialties/medical-services/>

1 (405) 948-4900

Okmulgee Indian Health Center

1313 East 20th Street
Okmulgee, OK 74447

<http://www.creekhealth.org/okmulgee-indian-health-center/>

1 (918) 591-5700

Pawnee Indian Health Center

1201 Heritage Circle
Pawnee, OK 74058

<https://www.ihs.gov/oklahomacity/healthcarefacilities/pawnee/>

1 (918) 762-2517

Perkins Family Clinic

509 East Highway 33
Perkins, OK 74059

<https://www.bahkhoje.com/native-services/health-services/>

1 (405) 547-2473

Purcell Health Clinic

1438 Hardcastle Boulevard
Purcell, OK 73080

<https://chickasaw.net/Our-Nation/Locations/Purcell-Health-Clinic.aspx>

1 (405) 527-4700

Redbird Smith Health Center

301 South J.T. Stites Boulevard
Sallisaw, OK 74955

<https://health.chokeee.org/>

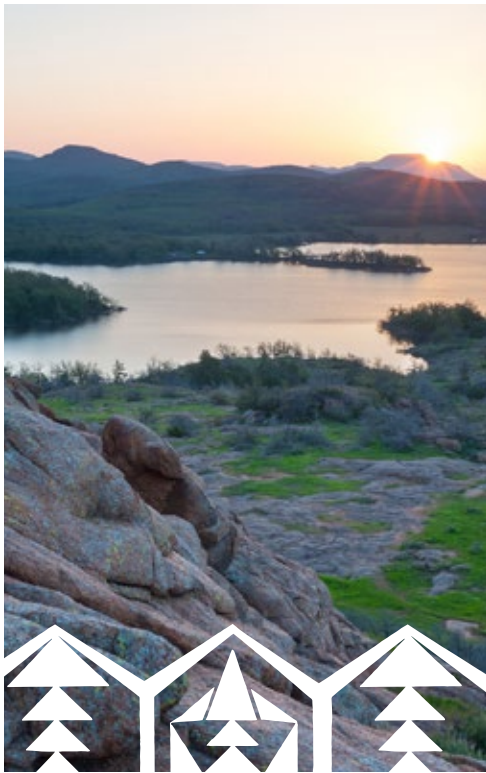
1 (918) 775-9159

Sam Hider Health Center

859 East Melton Drive
Jay, OK 74346

<https://health.chokeee.org/>

1 (918) 253-1700



Sapulpa Indian Health Center

1125 East Cleveland Avenue
Sapulpa, OK 74066
<http://www.creekhealth.org/sapulpa-indian-health-center/>
1 (918) 224-9310

Talihina Community Clinic

205 Dallas Street
Talihina, OK 74571
<https://www.choctawnation.com/talihina-community-clinic>
1 (918) 567-3636

Three Rivers Health Center

1001 South 41st Street East
Muskogee, OK 74403
<https://health.chokeee.org/>
1 (918) 781-6500

Tishomingo Health Clinic

817 East 6th Street
Tishomingo, OK 73460
<https://www.chickasaw.net/Our-Nation/Locations/Tishomingo-Health-Clinic.aspx>
1 (580) 371-2361

Vinita Health Center

27371 South 4410 Road
Vinita, OK 74301
<https://health.chokeee.org/>
1 (918) 256-4800

Wah-Zha-Zhi Health Center

175 Grandview Avenue
Pawhuska, OK 74056
<https://www.osagenation-nsn.gov/what-we-do/wah-zha-zhi-health-center>
1 (918) 287-9300

Watonga Indian Health Center

1305 South Clarence Nash Boulevard
Watonga, OK 73772
<https://www.ihs.gov/oklahomacity/healthcarefacilities/watonga-indian-health-center/>
1 (580) 623-4991

Wetumka Indian Health Center

333 S Washita Street
Wetumka, OK 74883
<https://www.creekhealth.org/wetumka-clinic/>
1 (405) 452-1313

Wewoka Indian Health Center

36640 U.S. 270
Wewoka, OK 74884
<https://www.ihs.gov/oklahomacity/healthcarefacilities/wewoka/>
1 (405) 257-6282

White Eagle Health Center

200 White Eagle Drive
Ponca City, OK 74601
<http://ponca.com/white-eagle-health-center.html>
1 (580) 765-2501

Will Rogers Health Center

1020 Lenape Drive
Nowata, OK 74048
<https://health.chokeee.org/>
1 (918) 273-7500

Wilma P. Mankiller Health Center

471688 Highway 51 East
Stilwell, OK 74960
<https://health.chokeee.org/>
1 (918) 696-8800

Texas

Medicare

Texas Medicare

<https://hhs.texas.gov/services/health/medicare>

1 (800) 252-9240

Children's Health

Children's Health Insurance Program (CHIP)

<https://hhs.texas.gov/services/health/medicaid-chip>

1 (877) 543-7669

Medicaid

Texas Medicaid

<https://hhs.texas.gov/services/health/medicaid-chip>

1 (800) 925-9126

Marketplace Coverage

healthcare.gov

healthcare.gov

1 (800) 318-2596

Indian Health Service, Tribal, or Urban Facilities

Alabama-Coushatta Tribe Chief Kina Health Clinic

129 Daycare Road
Livingston, TX 77351

<https://www.ihs.gov/nashville/healthcarefacilities/>

1 (936) 563-2058

Kickapoo Community Health Center

2192 Rosita Valley Road
Eagle Pass, TX 78852

<https://kickapootexas.org/services-administration/chs/>

1 (830) 773-2105

Urban Inter-Tribal Center of Texas

1261 Record Crossing Road
Dallas, TX 75235

<https://uitct.weebly.com/>

1 (214) 941-1050 ext. 200

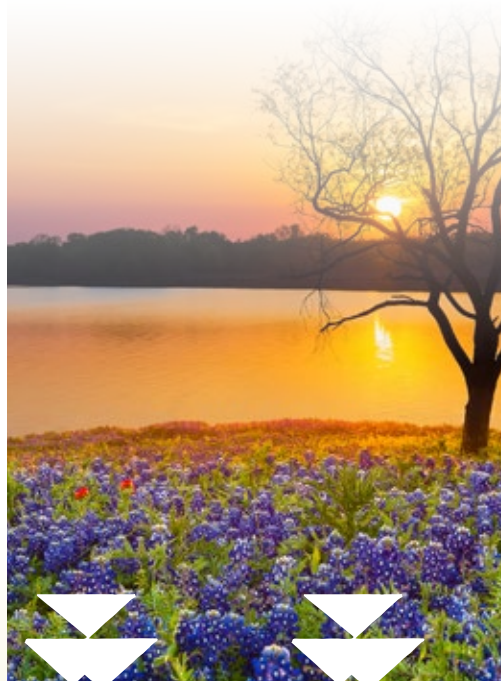
Ysleta Del Sur Health Station

9314 Juanchido Lane

Ysleta Del Sur Pueblo, TX 79907

<https://www.ysletadelsurpueblo.org/tribal-services/department-of-health-services>

1 (915) 858-1076





Learn More

CHIP: www.insurekidsnow.gov

Medicaid: www.medicaid.gov

Medicare: 1 (800) 623-4227; www.medicare.gov

Health Insurance Marketplace:
1 (800) 318-2596; healthcare.gov/tribal

**Additional American Indian and
Alaska Native resources from CMS:** Go.CMS.gov/AIAN



@CMSTGov



#CMSNativeHealth